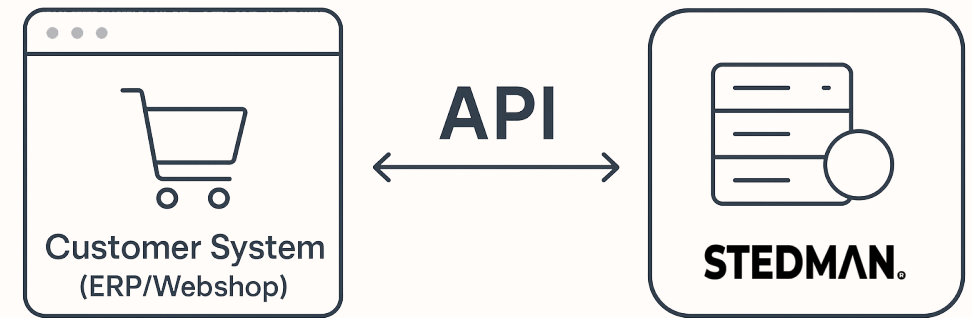


API PLATFORM

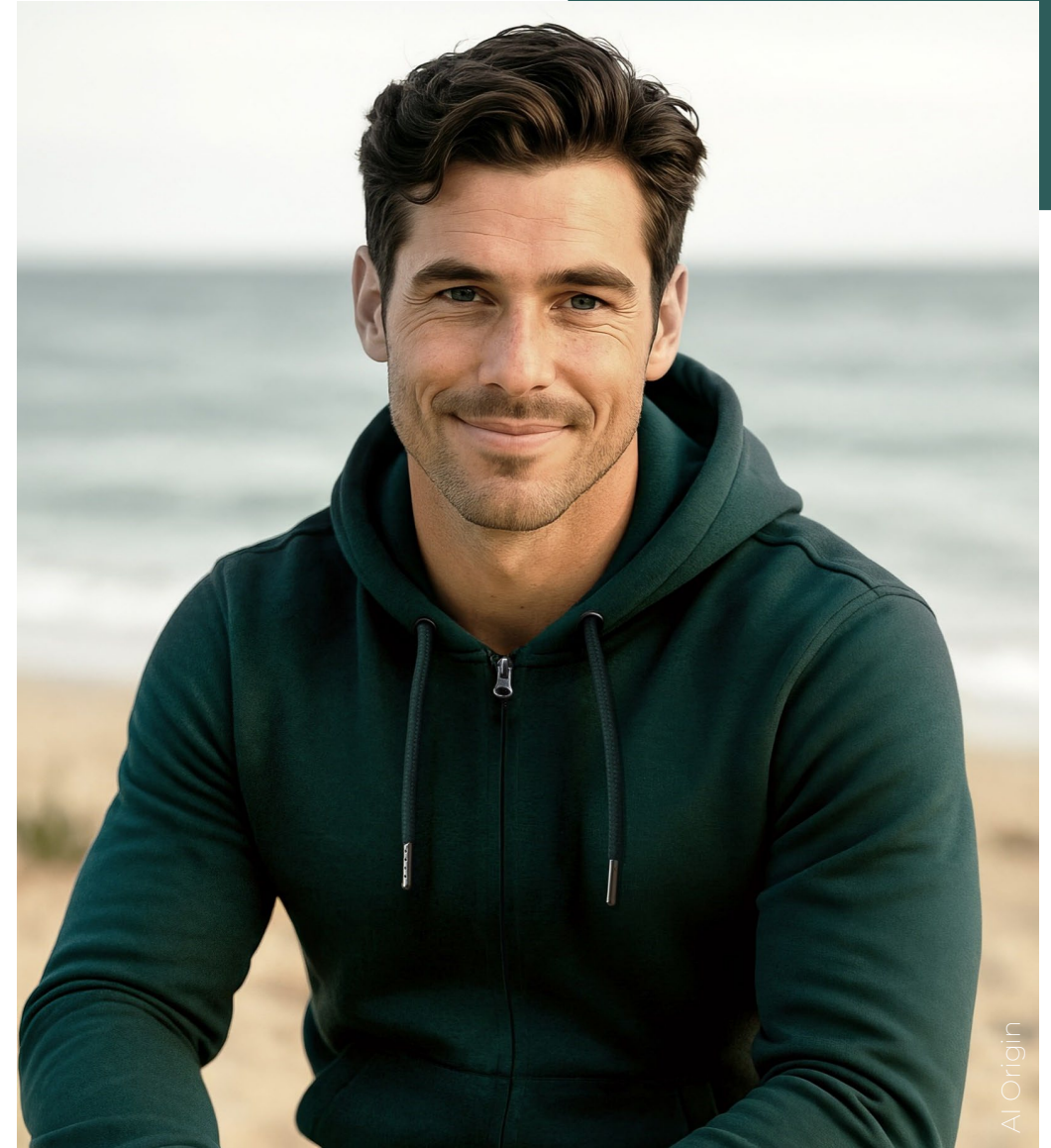
*The smart way to integrate product, order,
and stock data into your own systems*



STEDMAN®

WHY API ?

- ✖ Fast Integration
- ✖ Real-Time Data
- ✖ Automation potential
- ✖ Many Endpoints



AI Origin

STEDMAN.

Key Benefits

Efficiency

Save time by automating product imports & orders.

Accuracy

Always up-to-date stock and product data

Scalability

Connectable with ERP, Webshop and custom systems

Flexibility

Use only what you need

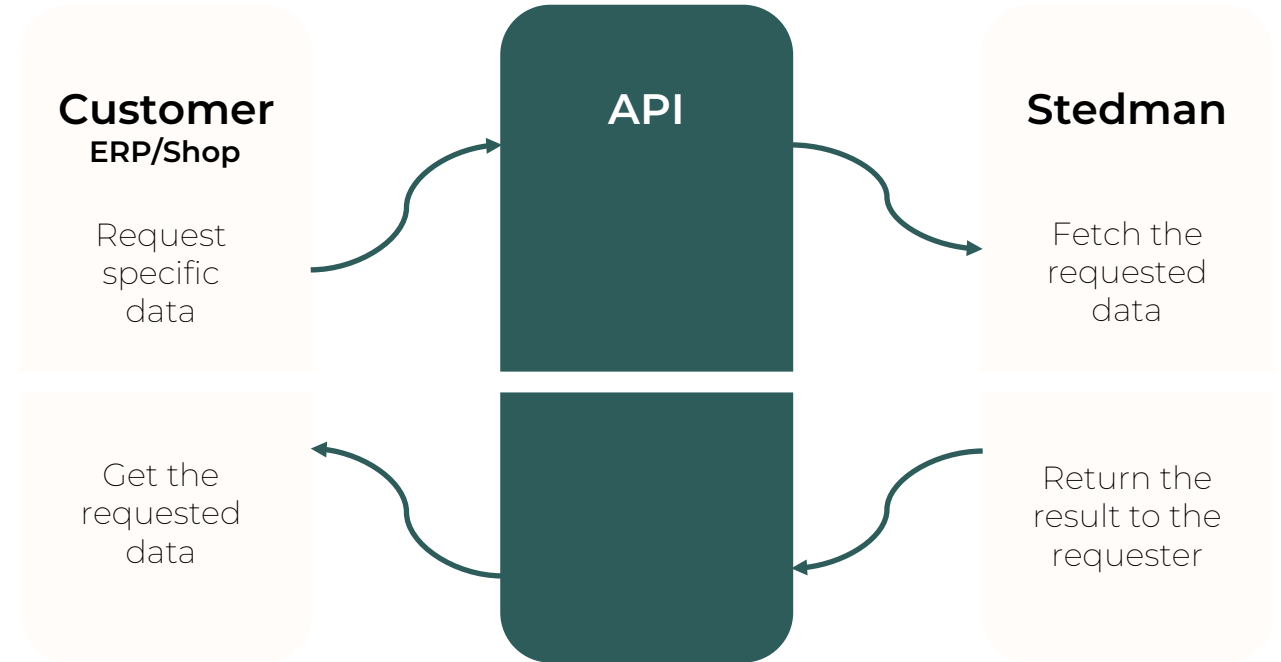
Partnership

Designed for our partners & customers

How it works

You connect via REST-API
using your personal API key.

The data flows securely and
in real time.



Response time regulary **less than 5 seconds!**

The API is the “bridge” that receives the request, validates it, and forwards it to the Stedman system in the correct format. Then it also brings back the response in a standardized way (JSON)

Example Request / Response

HTTP

```
1 GET /v1/stock/ST2000 HTTP/1.1
2 Host: api.stedman.eu
3 Authorisation: *****
```

Requests can be made using simple HTTP, PHP, Python, Java and other programming languages.

```
1 {
2   "product,,: [
3     {
4       "ean": "4043738479560",
5       "stock": 482
6     },
7     {
8       "ean": "4043738034769",
9       "stock": 1450
10    },
11    ...
12  ]
13 }
```

Possibilities

- ✖ Request product details (incl. variants, texts, images)
- ✖ Request live stock data
- ✖ Request price details
- ✖ Place orders
- ✖ Request last order details
- ✖ And even more ...

Get started

Reach out to your Sales Agent or our Customer Service Team to get started with the API.

support@stedman.eu
+49 241 70 50 20

Let's connect your business with Stedman today!



AI Origin

STEDMAN®